

The cover features the WILMAPCO logo at the top left. Below it, the title "2050 REGIONAL TRANSPORTATION PLAN" is written in a large, blue, sans-serif font, with "2023 UPDATE" in a smaller, orange font underneath. A subtitle "OVERVIEW OF DRAFT POLICIES AND PROJECTS" is in a small, light blue font. The bottom left corner contains the text "Delaware City" and "September 2022". On the right side, there is a graphic with a dark blue background and a white border. It includes the text "2023 UPDATE" at the top, five circular icons representing different modes of transport (train, bus, car, bicycle, pedestrian), and the large text "2050 REGIONAL TRANSPORTATION PLAN" at the bottom.

WILMAPCO

2050 REGIONAL TRANSPORTATION PLAN

2023 UPDATE

OVERVIEW OF DRAFT POLICIES AND PROJECTS

Delaware City
September 2022

2023 UPDATE

2050 REGIONAL TRANSPORTATION PLAN

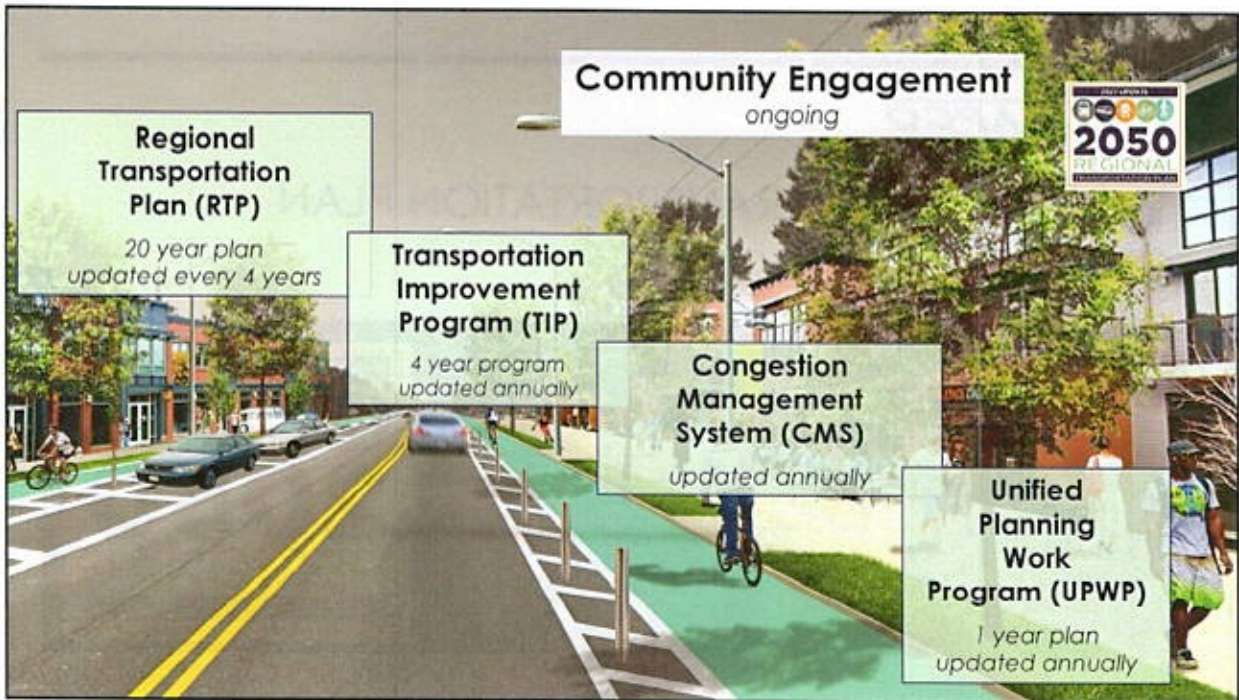
1

The slide has a background image of a person standing next to a blue bus. A semi-transparent blue box is overlaid on the image, containing the title "WILMINGTON AREA PLANNING COUNCIL (WILMAPCO)" and a list of four bullet points.

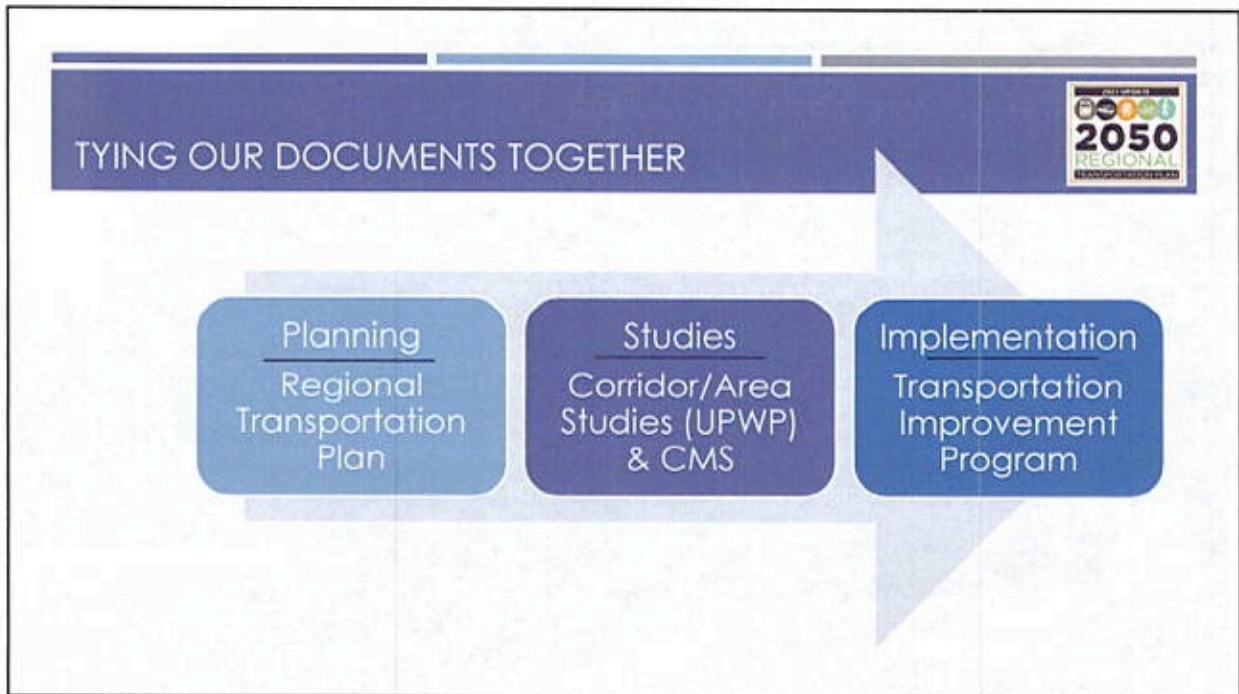
WILMINGTON AREA PLANNING COUNCIL (WILMAPCO)

- Regional transportation planning agency for New Castle County and Cecil County
- Charged with planning and coordinating transportation investments based on federal policy, local input, technical analysis, and best practices.
- We involve the public to ensure that you have a say in the transportation decision-making and funding process.
- We do not have a dedicated source of funding to make projects a reality. This falls on the counties, towns/cities, and DelDOT.

2



3



4

THE REGIONAL TRANSPORTATION PLAN (RTP)



- Our principal plan
 - **Strategic Policy:** goals, objectives, actions
 - **Major transportation projects:** constrained and aspirational
- Updated every four years (since 1996)
- Update due March 2023



5


SCHEDULE – KEY TASKS



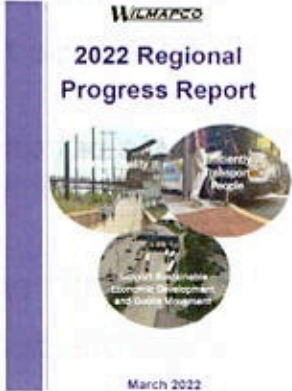
- Review of **Progress Report & Public Opinion Survey**
- Develop draft goals, objectives, actions
- Agency/Civic/Municipal outreach
- Develop project lists
- Air quality conformity
- Public Outreach
- Document refinement
- Adoption



6



TRACKING PROGRESS: PROGRESS REPORT




- 2022 Regional Progress Report
- Relates trends to Plan's actions
- Performance-based
- Informs development of RTP



March 2022

7


TRACKING PROGRESS: PROGRESS REPORT

	<p style="color: #c00000; font-weight: bold;">17% of actions</p>	<p style="color: #c00000; font-weight: bold;">Challenges</p> <ul style="list-style-type: none"> ○ Growth outside Centers/Core ○ Single occupancy vehicle trips ○ Vehicle miles traveled ○ Road safety
	<p style="color: #ffc000; font-weight: bold;">23% of actions</p>	<p style="color: #008000; font-weight: bold;">Successes</p> <ul style="list-style-type: none"> ○ Air quality ○ Local plan implementation ○ Bike and walking efforts ○ Congestion mitigation
	<p style="color: #008000; font-weight: bold;">60% of actions</p>	

8

PUBLIC OPINION SURVEY



- Statistically valid telephone survey of 600 residents
- Demographic quotas
- Opinions of transportation system and policies
- Informs development of the RTP

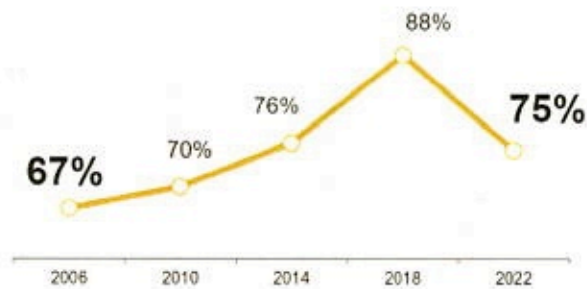


9

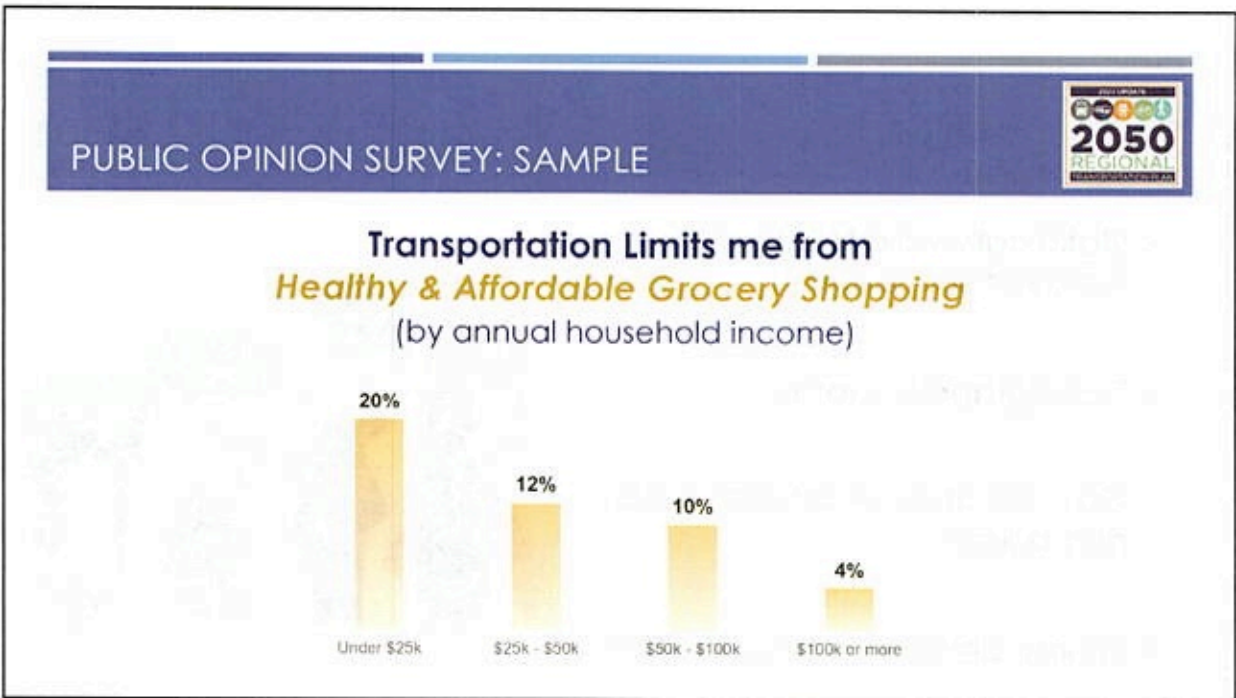
PUBLIC OPINION SURVEY: SAMPLE



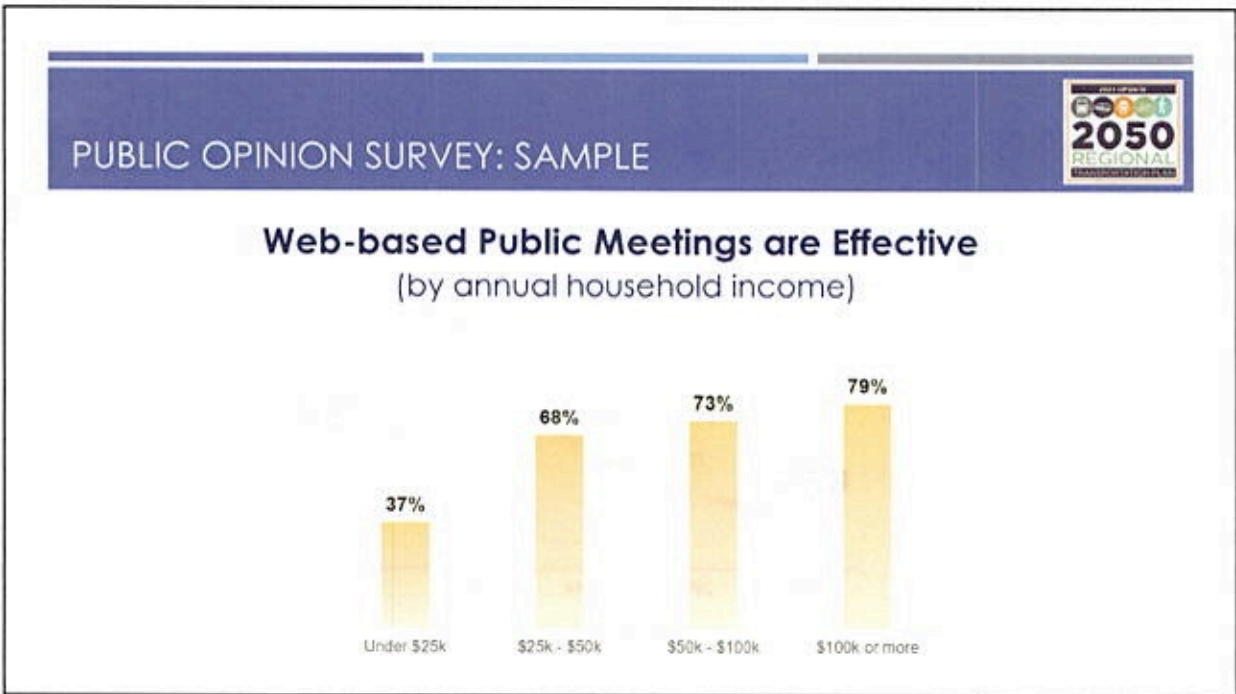
The Transportation System Meet my Needs



10



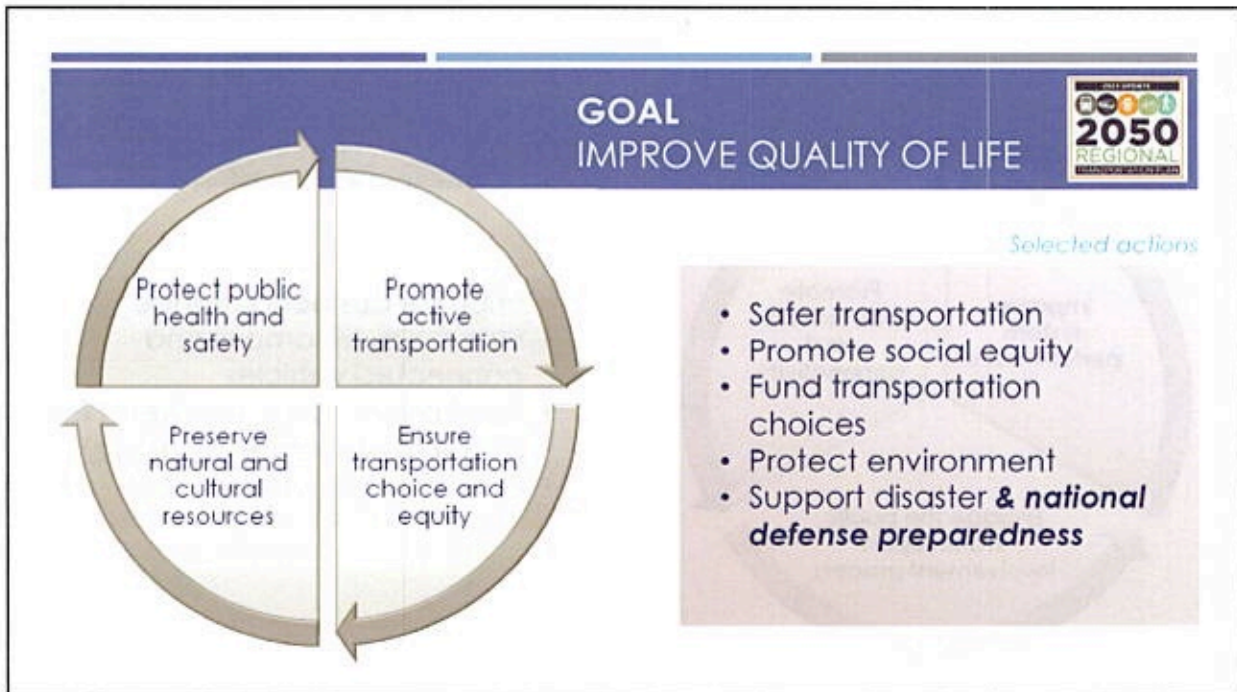
11




12



13

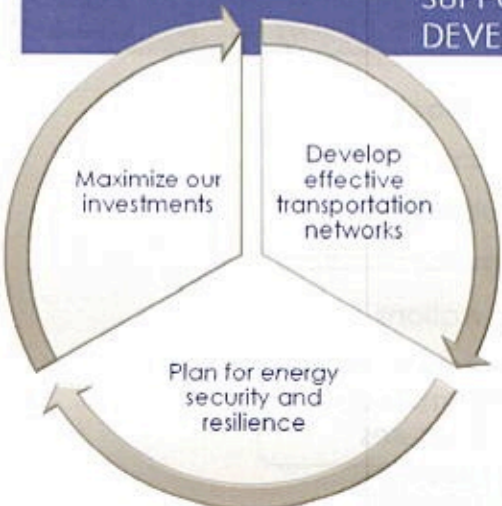


14



GOAL

SUPPORT SUSTAINABLE ECONOMIC DEVELOPMENT & GOODS MOVEMENT



Selected actions

- Use prioritization process
- Create and support local plans
- Manage traffic congestion
- Streamline freight
- Ensure public accessibility of data**
- Support a greener transportation system (**new PM: VMT target**)

15



GOAL

EFFICIENTLY TRANSPORT PEOPLE



Selected actions

- Improve bus performance
- Plan for autonomous and connected vehicles
- Fund preservation first (**new PM: preservation target spending**)
- Robust public participation

16

TRANSPORTATION PROJECTS



New Castle County

Projected Funding Available (in year of expenditure)



2023 – 2028: \$1 billion

2029 – 2039: \$1.5 billion

2040 – 2050: \$2 billion

17

TRANSPORTATION PROJECTS



SELECTED REGIONAL PROJECTS (350+ projects total)

- I-95: Susquehanna River to DE Line (\$1b, 2050)
- Transit Expansion/Enhancements (\$544m, 2030-2050)
- New Technologies (EVs/AVs, etc.) Support (\$392m, 2030-2050)
- I-95 and SR 896 Interchange (\$212m, 2035)
- SR 1: Tybouts Corner to SR 273 (\$157m, 2035)
- SR 1: Tybouts Corner to Roth Bridge (\$155m, 2045)
- Newport Rail Station (\$43m, ?)

18

TRANSPORTATION PROJECTS



SELECTED LOCAL PROJECTS

- Delaware City Transportation Plan (uncompleted projects, grouped)
- US 13 and Bear Rd./Hamburg Rd. (truck parking facility)
- SR 72: McCoy Road - SR 71 (multimodal; expansion)
- SR 72: Del Laws Drive to Willamette Drive (widening – modeled in 2050)
- US 13 at SR 71 (intersection improvements)
- US 13: South of Marl Pit Rd. to Lorewood Grove Rd. (intersections and signals)

19

NEXT STEPS



- Prioritize and refine project listing
- Complete air quality conformity analysis
- Continue agency coordination and public outreach

20

